

# Combined Retinal Detachment in Von – Hippel Lindau Disease: A Case Report

Shilpi H Narnaware<sup>1</sup>, Prashant K Bawankule<sup>2</sup>

<sup>1</sup>Consultant Vitreo-Retina and ROP Specialist, Sarakshi Netralaya, Nagpur, Maharashtra, <sup>2</sup>Managing Director and VR Surgeon, Sarakshi Netralaya, Nagpur, Maharashtra, India

**Corresponding author:** Dr. Shilpi H Narnaware, Sarakshi Netralaya, Plot no 19, Rajiv Nagar, Nagpur -440025, Maharashtra, India

DOI: <http://dx.doi.org/10.21276/ijcmsr.2019.4.1.28>

**How to cite this article:** Shilpi H Narnaware, Prashant K Bawankule. Combined retinal detachment in von – hippel lindau disease: a case report. International Journal of Contemporary Medicine Surgery and Radiology. 2019;4(1):A111-A112.

## ABSTRACT

**Introduction:** Retinal capillary hemangiomas (RCH) highlights the necessity of regular screening in family members patients with suspected Von-Hippel Lindau disease and importance of timely management, even in cases of associated complications.

**Case report:** A case of 17 years old female presenting with combined retinal detachment, secondary to retinal capillary haemangioma with strong family history suggestive of Von-Hippel Lindau (VHL) Syndrome. Pars plana vitrectomy with encircling band with trans scleral cryotherapy to hemangioma and silicone oil insertion was done to manage the case.

**Conclusion:** Timely screening, diagnosis and management of disease helps in preventing the morbidity and mortality associated with VHL disease

**Keywords:** Combined Retinal Detachment in Von, Hippel Lindau Disease

## INTRODUCTION

Von –Hippel –Lindau disease (VHL) is a multisystem syndrome presenting as a benign or malignant tumor of central nervous system, pheochromocytoma, pancreatic tumors, renal cell carcinoma, retinal hemangioblastomas.<sup>1-3</sup> Retinal capillary hemangiomas (RCH) are often the earliest and most common manifestation<sup>1</sup> and occurs in 43-67% of VHL patients.<sup>4,6</sup> RCH is usually a solitary tumor in temporal peripheral retina, supplied by a pair of dilated and tortuous feeder vessels, but, can present as multiple retinal hemangiomas in 1/3<sup>rd</sup> of the patients. 11-15% cases can present as juxta-papillary hemangiomas. Small lesions may remain stable for years but mostly enlarge progressively and in late stages leading to combined retinal detachment, uveitis, glaucoma and pthisis.<sup>7</sup>

## CASE REPORT

A 17 year old female presented with complaints of sudden diminution of vision in right eye since 7 days. On examination, her vision was hand movements in right eye with normal anterior segment. Fundus revealed combined retinal detachment secondary to capillary hemangioma in temporal quadrant (Figure 1a and 1b). Left eye examination was essentially normal. On enquiring, patient revealed family history of some CNS tumor in grandfather and Glomus jugulare (under treatment) in father. Clinical findings and family history pointed towards diagnosis of VHL. Patient was undertaken for Right eye Vitrectomy + belt buckle + membrane peel + endolaser + trans-scleral cryotherapy

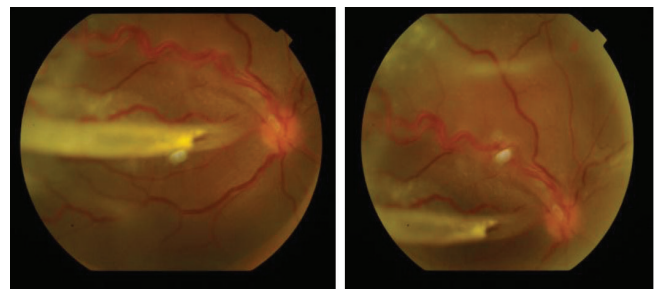


Figure-1A and B:

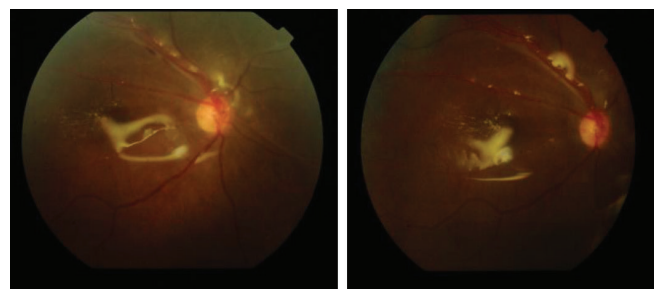


Figure-2A and B:

+ silicone oil insertion after ruling out other systemic involvement. On follow up after 4 months her BCVA was 6/24, with attached retina under oil (Figure 2a and 2b).

## DISCUSSION

VHL is an inherited disease, whose gene is located on chromosome 3p and functions as a tumor suppressor gene, which spreads in an autosomal dominant pattern. It

may have incomplete or near complete penetrance, thus importance of genetic screening in early diagnosis and hence treatment.<sup>8</sup> Retinal capillary hemangiomas usually present between 10–40 years of age<sup>9</sup> with mean age of 25 years. Few reports has indicated prevalence rate of hemangioma usually stabilises by 30 years of age, therefore very less likelihood of developing haemangioms later on.<sup>10</sup> Retinal capillary hemangioma shows variable course which may vary from progression to stability to spontaneous regression. Therefore, treatment options vary from observation of small nasal or juxta-papillary tumors, while laser therapy is instituted for posteriorly located tumors and cryotherapy (double-freeze thaw technique)<sup>9-11</sup> for anterior ones. In case of complications like combined retinal detachment, vitrectomy is advocated and other complications like uveitis and glaucoma are managed accordingly.

Diagnosis of VHL is based on three elements: Retinal capillary hemangiomas or CNS hemangioma, visceral lesions and family history.<sup>9-11</sup> Once diagnosis is made, screening of patient and relatives should be done according to screening protocols, which include catecholamines levels, indirect ophthalmoscopy, CT/MRI scan.

## CONCLUSION

Timely screening and hence, early management of high risk population, will help in preventing morbidities and better quality of life.

### Limitation

Genetic testing was not done.

## REFERENCES

1. Maher ER, Yates JRW, Harries R, Benjamin C, Harris R, Moore AT, et al. Clinical features and natural history of von Hippel-Lindau disease. *QJ Med.* 1990;77:1151–63.
2. Richard S, David P, Marsot-Dupuch K, Giraud S, Buroud C, Resche F. Central nervous system hemangioblastomas, endolymphatic sac tumors and von Hippel-Lindau disease. *Neurosurg Rev.* 2000;23:1–22.
3. Clifford SC, Maher ER. Von Hippel-Lindau disease: Clinical and molecular perspectives. *Adv Cancer Res.* 2001;82:85–105.
4. Wittebol-Post D, Hes FJ, Lips CJ. The eye in von Hippel-Lindau disease: long-term follow-up of screening and treatment: recommendations. *J Int Med.* 1998;243:555–61.
5. Webster AR, Richards FM, MacRonald FE, Moore AT, Maher ER. An analysis of phenotypic variation in the familial cancer syndrome von Hippel-Lindau disease: evidence for modifier effects. *Am J Hum Genet.* 1998;63:1025–35.
6. Webster AR, Moore AT, Maher ER. The clinical characteristics of ocular angiomas in von Hippel-Lindau disease and correlation with germline mutation. *Arch Ophthalmol.* 1999;117:371–8.
7. Singh AD, Shields CL, Shields JA. von Hippel-Lindau disease. *Surv Ophthalmol.* 2001;46:117-142.
8. Wong WT, Chew EY. Ocular von Hippel-Lindau disease: clinical update and emerging treatments. *Curr Opin Ophthalmol.* 2008;19:213-217.
9. Singh AD, Shields CL, Shields JA. von Hippel-Lindau disease. *Surv Ophthalmol.* 2001;46:117-142.
10. Magee MA, Kroll AJ, Lou PL, Ryan EA. Retinal capillary hemangiomas and von Hippel-Lindau disease. *Semin Ophthalmol.* 2006;21:143-150.
11. Webster AR, Maher ER, Moore AT. Clinical characteristics of ocular angiomas in von Hippel-Lindau disease and correlation with germline mutation. *Arch Ophthalmol.* 1999;117:371-378.

**Source of Support:** Nil; **Conflict of Interest:** None

**Submitted:** 12-02-2019; **Accepted:** 15-03-2019; **Published online:** 28-03-2019